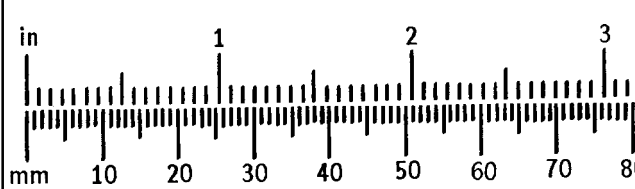
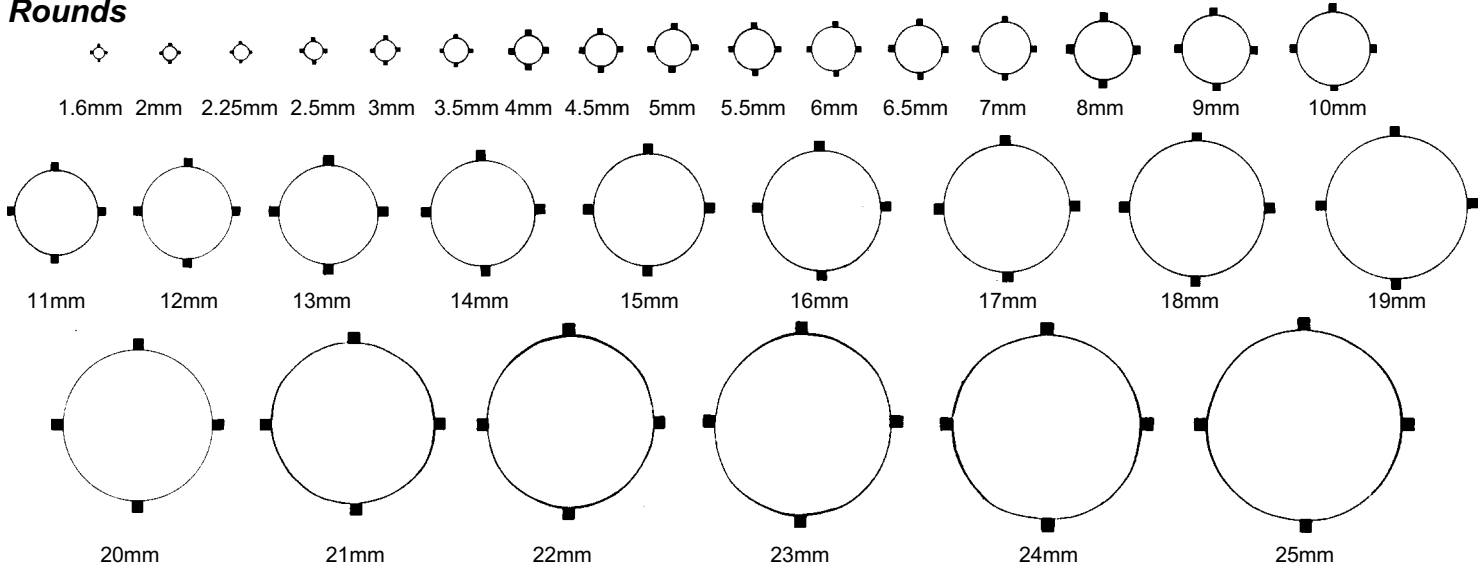


...Charts for You to Keep...

You can use these diagrams to approximate the size of loose gems. Simply place the gem onto the drawing where the gem covers the thin border of the drawing but not the square "prong" blocks.

...Be sure to check the ruler below to be sure there is no distortion of these diagrams in download or print...

Rounds



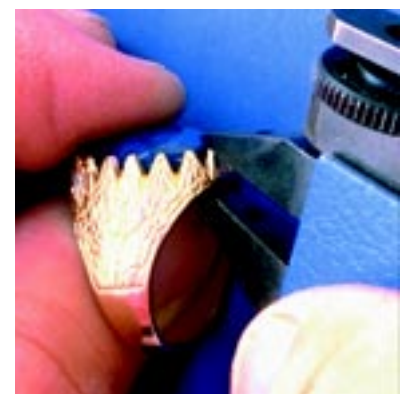
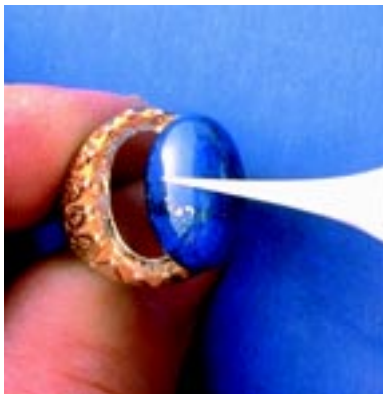
Here's a handy Ruler that gives both Inches and Millimeters. This allows you to see the comparison between the two and you can also measure your gems on the Millimeter scale. You should take a minute and use a separate ruler to check this one to be sure the download or print didn't change the accuracy before actually using any of the gem diagrams.

Tripp's ..the Opportunity Company, provides you with everything you need to create beautiful, professional jewelry at super wholesale prices. You will be amazed at how easy and profitable the jewelry business can be!

...You Can Do It!

...We guarantee it!

**..as
Easy
as
1-2-3!**



1. Place the Gem into the setting

2. Set the pliers to fit the prong

3. Bend the prongs down

Remember, our complete catalog is only \$8 for over 300 full color pages of super wholesale bargains!

So call us now at 1-800-545-7962 and get started in the fabulous world of jewelry creation. Our friendly operators will rush you everything you need to get started on your way to success! *Thanks! ...Tripp's*